

SAVARIA GEARLESS HOME ELEVATOR



ELEVATE TO THE BEST

 **savaria.**

Gearless traction technology from Savaria provides an exceptionally quiet ride for the occupants and silence for the surrounding home area. A stable, smooth ride with soft start and stop can be configured to service up to six levels.

Finish your Savaria home elevator exactly how you want it, whether you order a custom finish or have your contractor finish on site. When you choose the Savaria Gearless, you appreciate the best.



WHISPER QUIET

The gearless traction system by Savaria features a gearless electric motor that operates with very low noise levels. High-density rubber roller guides and dual elevator ropes also keep mechanical noise low. Whether you are riding the elevator, or in an adjacent room, the overall operation is whisper quiet.

SMOOTH RIDING

The Savaria gearless elevator provides a smooth start, soft stop and gliding smooth movement throughout. No jerky motions, the ride is luxury from start to finish.



Your dream home
deserves a dream elevator.



CHOOSE YOUR FINISHES

Elevator Cab Interiors

Choose from a selection of finished hardwood or veneer cabs in traditional species including oak, cherry and maple. We also offer high quality white MDF with a traditional raised profile or choose a decorative covering to create the perfect style element in your home elevator.

- Hardwood
- Veneer with hardwood moulding
- Unfinished veneer
- White lacquered MDF
- Designer Series Decorative Covering
- Melamine

Fixtures

Choose from stainless steel, anodized aluminum, anodized bronze or brass fixtures including cab operating panel, hall call stations and handrail.



Stainless Steel
Anodized Aluminum
Anodized Bronze
Brass

► See color chart for more details



Unfinished Veneer	Melamine	Veneer and Hardwood
Birch	Flamenco Cherry	Maple
Oak	Ashburn Cherry	Oak
Maple	Candlelight	Cherry
Cherry	Red Oak	Hardwood
	Silken Maple	Maple
	Antique White	Oak
		Cherry



Savaria Auto Slim Doors

Add convenience and an elegant, modern appearance to your Savaria gearless elevator with Savaria automatic slim doors. With their innovative design, the sill between the landing floor and the elevator cab is kept compact. Finish the doors in a choice of powder coated paint, or upgrade with stainless steel. You can even finish the inside and outside differently to match your décor.

Cab Gates

Three styles of accordion gates are available.

Panelfold

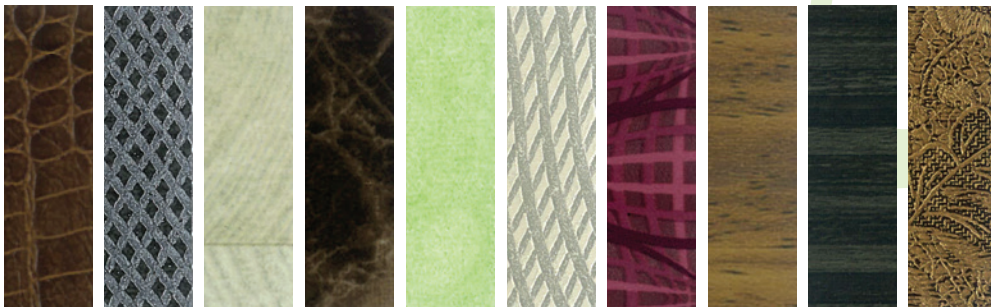
Visifold

Clearfold

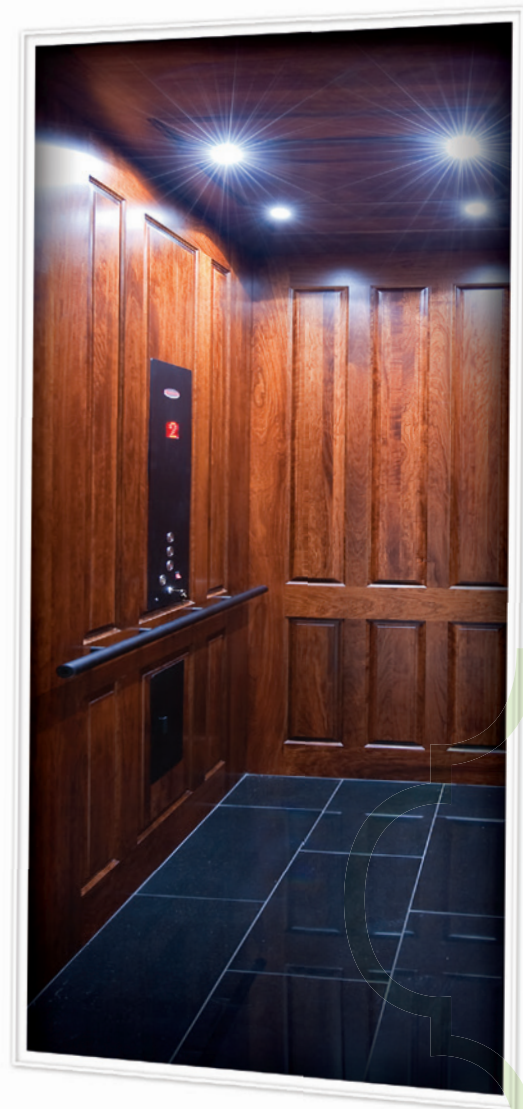


Designer Series Decorative Covering

textures • colors • metallic effects • simulated leather • cork



► Consult Savaria or your local dealer for more information



About Savaria

In business for over 30 years, Savaria designs, engineers and manufactures products to help people gain personal mobility. We produce elevators – from basic to luxurious – for homes and select commercial applications. We also make a complete range of accessibility lifts for residential use and demanding commercial environments.

All of our products are made with the goal of helping people move – whether it's to improve mobility issues or to simply make life easier. By listening to each customer's unique needs, we're able to provide individualized solutions – whether it is for health reasons or just personal preferences.

Savaria is the company that brings personal mobility solutions to your life: in the home, in a vehicle and in public spaces.

Authorized Savaria dealers are carefully selected for their knowledge and experience, kept up-to-date with the latest technical and training sessions, and supported with our expert customer service.

Your local Savaria dealer can help customize your gearless elevator to your specific needs. To locate a Savaria dealer near you, please call us, or visit our web site, www.savaria.com

UNDER THE HOOD

Gearless traction system

- Compact design for less overhead clearance required (108" - 112") and only 8" pit
- 1HP gearless electric motor for quiet, efficient and reliable performance
- Fast travel, up to 60 fpm (where code permits)

Modular uni-body rail system

- Structural consistency of rails, drive and operational components

Sealed bearing rubber guide rollers

- High density rubber provides amazingly quiet and smooth performance even over rail joints

Adjustable sling

- Accommodates 80" to 96" cab heights

Bi-directional overspeed governor

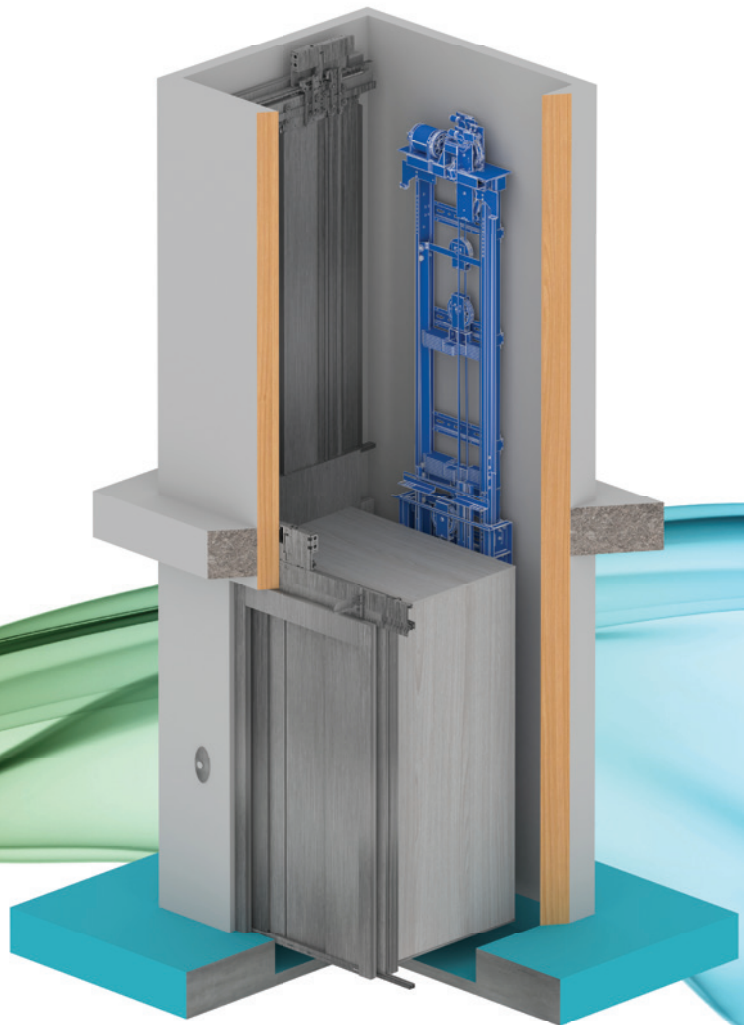
- Safe, reliable operation

Dual traction ropes

- "Big elevator grade" for smooth, quiet ride

Slack cable safety brake

- Ensures uniform cable tension at all times and safety in both up and down directions



EXCEPTIONAL STANDARD FEATURES

- 2 stops with up to 10' of travel (up to 60' where code permits)
- 750 lb or 950 lb capacity
- 36" x 48", 36" x 54", 40" x 54" or 36" x 60" cab size
- 80" or 84" cab height
- Cab entry/exit: same side or walk through
- Emergency alarm and stop buttons
- Full battery back-up system
- 8" minimum pit depth
- Nominal speed: 60 fpm (0.30 mps)
- Power: 230 volt, single phase, 60 Hz, 20 amps
- Choice of six (6) melamine wall panels or MDF cab finish
- Solid ceiling with four recessed LED down lights
- Stainless steel or anodized aluminum cab operating panel
- Automatic, illuminated push button operation
- Digital floor and directional indicator
- Stainless steel or anodized aluminum rectangular hall call stations
- Clear or bronze anodized aluminum cab trim
- Cylindrical handrail in clear or bronze anodized aluminum
- Recessed plywood flooring
- Basic surface-mount telephone
- Backed by the Savaria limited warranty which covers the repair or replacement of any defective parts for a period of 36 months from date of shipment. Ask dealer for full details.

ADDITIONAL OPTIONS

- Up to 6 stops with up to 60' of travel where code permits
- Custom cab sizes (up to 15 sq. ft.)
- 96" cab height (108" clear overhead required)
- 90-degree entry/exit cab options
- Hardwood, veneer, lacquered MDF or designer series decorative covering for elevator cab
- Automatic swing door operator, automatic gate operator
- Telephone cabinet in brass, stainless steel or anodized aluminum
- For the ultimate in luxury and convenience, add Savaria automatic slim doors (requires 84" cab)

GEARLESS CAB FEATURES

S=standard O=optional

Cab Walls

Unfinished MDF or melamine	S
Unfinished veneer	O
Lacquered, routed white MDF	
Veneer with hardwood trim cherry, maple or oak	O
Raised panel hardwood: cherry, maple or oak	O

Ceilings

Standard architectural white or MDF	S
Match to cab wall selection	O

Cab Entrance Trim

Clear or bronze anodized aluminum	S
---	---

Gates

Black scissor	O
Panelfold (bronze frame, 3 clear acrylic inserts and antique white inserts)	O
Panelfold (clear anodized frame, 3 clear acrylic inserts and antique white inserts)	O
Clearfold (clear anodized frame with clear acrylic inserts)	O
Visifold (bronze frame with bronze acrylic inserts)	O
Savaria automatic slim doors	O

Lights

Recessed clear or bronze anodized aluminum down lights	S
Recessed brass down lights	O

Handrails

Cylindrical clear or bronze anodized aluminum	S
Cylindrical stainless steel	O
Cylindrical brass	O

Cab Operating Panel

Stainless steel	S
Clear or bronze anodized aluminum	S
Brass	O

Hall Call Stations

Rectangular stainless steel	S
Rectangular clear or bronze anodized aluminum	S
Rectangular brass	O
Oval design on any hall call finish	O

Authorized Savaria dealer:



www.savaria.com

2 Walker Drive, Brampton, ON L6T 5E1 Canada

tel: 800.661.5112 fax: 905.791.2222